

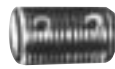
# Accessories

## C SERIES

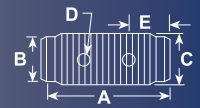
### Mounting accessories

#### C Series

# CYLINDERS



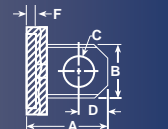
**Threaded Connector**



Cylinder Tons	Part No.	A (mm)	B (mm)	C (in)	D (mm)	E (mm)
5	<b>25748</b>	44,5	22,4	$\frac{3}{4}$ -14 NSPM	4,8	12,7
10	<b>25664</b>	41,4	36,6	1 $\frac{1}{4}$ -11 $\frac{1}{2}$ NSPM	7,9	14,2
25	<b>25654</b>	57,2	54,1	2-11 $\frac{1}{2}$ NSPM	9,7	16

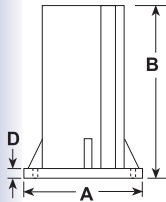


**Piston Clevis**



Cylinder Tons	Part No.	A (mm)	B (mm)	C (mm)	D (mm)	E (mm)	F (mm)
5**	<b>350095</b>	44,5	28,7	16	36,6	16	14,2
10 or 15**	<b>350094</b>	65	42,9	22,4	58,7	25,4	25,4
25**	<b>420059</b>	74,7	57,2	31,8	68,3	31,8	38,1

\*\* Can be used with RD106, RD1010 Cylinder.

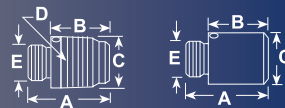


**Support Base**

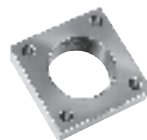
Cylinder	Order	A (mm)	B (mm)	C (mm)
10	<b>420062</b>	177,8	127	11,2
25	<b>420063</b>	177,8	127	11,2



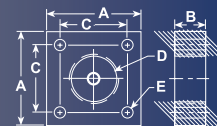
**Threaded Adapter Plain Adapter**



Cylinder Tons	Part No.	A (mm)	B (mm)	C (mm)	D (in)	E (in)
5	<b>202178</b> (threaded)	41,4	28,7	26,9	$\frac{3}{4}$ -14 NPT	$\frac{3}{4}$ -16UNF-2A
10 or 15	<b>202179</b> (threaded)	46,0	26,9	41,4	1 $\frac{1}{4}$ -11 $\frac{1}{2}$ -NPT	1-8UNC-2A
25	<b>202180</b> (threaded)	69,9	47,8	60,5	2-11 $\frac{1}{2}$ -NPT	1 $\frac{1}{2}$ -16UN-2A
10 or 15	<b>350724</b> (plain)	50,8	31,8	37,6	-	1-8UNC-2A
25	<b>350723</b> (plain)	54,1	31,8	57,2	-	1 $\frac{1}{2}$ -16UN-2A

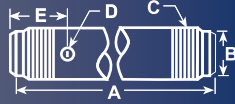


**Cylinder Mounting Plate**



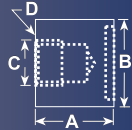
Cylinder Tons	Part No.	A (mm)	B (mm)	C (mm)	D (in)	E (mm)
5	<b>350099</b>	76,2	25,4	54,1	1 $\frac{1}{2}$ -16UN-2B	8,6
10	<b>350100</b>	88,9	25,4	66,8	2 $\frac{1}{4}$ -14UNS-2B	8,6
15	<b>350184</b>	88,9	25,4	66,8	2 $\frac{3}{4}$ -16UN-2B	8,6
25	<b>420064</b>	127	50,8	93	3 $\frac{5}{16}$ -12UN-2B	16,8

### Extension Rod



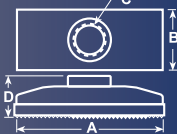
Cylinder Tons	Part No.	A (mm)	B (mm)	C (in)	D (mm)	E (mm)
5	<b>350895</b>	127	22,4	3/4-14 NPT	8,4	50,8
5	<b>38908</b>	254	22,4	3/4-14 NPT	8,4	50,8
5	<b>350896</b>	457,2	22,4	3/4-14 NPT	8,4	50,8
10	<b>350897</b>	127	36,6	1 1/4-11 1/2 NPT	8,4	50,8
10	<b>38909</b>	254	36,6	1 1/4-11 1/2 NPT	8,4	50,8
10	<b>350898</b>	457,2	36,6	1 1/4-11 1/2 NPT	8,4	50,8

### Cylinder Base Attachment



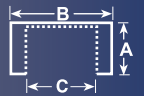
Cylinder Tons	Part No.	A (mm)	B (mm)	C (in)	D (mm/in)
5†	<b>208380</b>	41,4	44,5	3/4-14NPSM	7,1Dia.( No.2) 1/4-20 UNC x3/4"
Lg.Socket Head Cap Screws					
10†	<b>208381</b>	47,8	63,5	1 1/4-11 1/2 NPSM	8,6 Dia.( No.2) 5/16-18 UNC x1"
Lg. Socket Head Cap Screws					
25†	<b>208382</b>	60,5	98,6	2-11 1/2 NPSM	13,5 Dia. ( No.2) 1/2-13 UNC x 1"
Lg. Socket Head Cap Screws					

### Cylinder Flat Base



Cylinder Tons	Part No.	A (mm)	B (mm)	C (in)	D (mm)
5	<b>25750*</b>	114,3	63,5	3/4-14-NPSM	34
10	<b>32325*</b>	166,6	88,9	1 1/4-11 1/2 NPSM	36,6

### Smooth Saddle      Serrated Saddle



Cylinder Tons	Part No.	A (mm)	B (mm)	C (in)
5	<b>25746* (serrated)</b>	28,7	33,3	3/4-14NPSM
10 or 15	<b>31772* (serrated)</b>	28,7	50,8	1 1/4-11 1/2 NPSM
25	<b>31776* (serrated)</b>	33,3	76,2	2-11 1/2 NPSM
5	<b>351575* (plain)</b>	28,7	33,3	3/4-14-NPSM
10	<b>24016* (plain)</b>	28,7	50,8	1 1/4-11 1/2 NPSM
25	<b>351576* (plain)</b>	33,3	76,2	2-11 1/2 NPSM

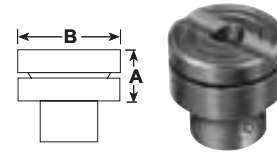
### Body Clevis†



Cylinder Tons	Part No.	A (mm)	B (mm)	C (mm)	D (mm)	E (mm)	F (mm)
5	<b>350096</b>	52,3	28,7	16	16	14,2	6,4
10	<b>350097</b>	76,2	42,9	22,4	25,4	25,4	6,4
15	<b>350098</b>	77,7	42,9	22,4	25,4	25,4	6,4
25	<b>420061</b>	90,4	57,2	31,8	31,8	38,1	6,4

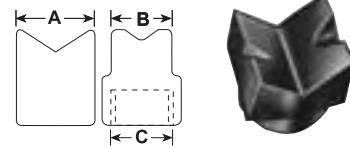
\* Items require threaded adapter (Page 36) when used with "C" series cylinders. They may be used on threaded "CBT" cylinders without the use of an adapter.

† Mounting screws are included.



### Swivel Cap

Cylinder Tons	Part No.	A (mm)	B (mm)
10 or 15	<b>350144</b>	22,4	30,1
25	<b>350145</b>	28,7	50,8
55 or 75	<b>350376</b>	31,8	71,4
100	<b>351574</b>	48,5	88,1



### 90° "V" Base

Cylinder Tons	Part No.	A (mm)	B (mm)	C (in)
5	<b>25388*</b>	35,1	26,9	3/4-14-NPSM
10	<b>25395*</b>	54,1	54,1	1 1/4-11 1/2 NPSM

### Plunger Base

Cylinder Tons	Part No.	A (mm)	B (mm)	C (in)
25	<b>25652</b>	152,4	31,8	2-11 1/2 NPSM

CYLINDERS