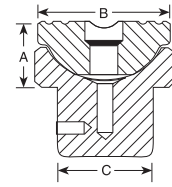
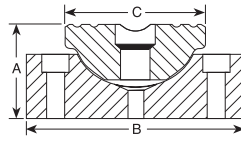


Accessories

Swivel Caps Center Hole Accessories

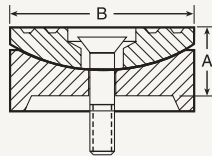


CYLINDERS

SWIVEL CAPS FOR "RSS",					
Use with Cyl. No.	Swivel Cap Order No.	Weight (kg)	A (mm)	B (mm)	C (mm)
RSS101	350320	0,2	25,4	36,5	36,5
RSS202	350321	0,6	34,9	54	54
RSS302	350322	0,7	34,9	63,5	54
RSS502	350331	1,2	36,5	82,6	54
RSS1002	350332	3,0	46	111,1	85,7
Tonnage		"RA" Cylinders			
55	350376	0,9	31,8	71,4	71,4
100	350984	2,5	49,2	95,3	79,4

SWIVEL CAPS FOR "RD" CYLINDERS					
Cylinder Tonnage	Swivel Cap Order No.	Weight (kg)	A (mm)	B (mm)	C (mm)
10	350144	0,4	22,2	36,5	21,8
25	350145	0,6	28,6	54	36,5
55	351325	1,9	61,9	63,5	39,3
100	351324	5,1	75,0	95,3	67,5
150	351334	5,8	66,7	111,1	77,8

For use with "RC" cylinders			SWIVEL CAPS Reduce the effects of off center loading. Tilts up to 5 degrees. Radial grooves on top of cap reduce load slippage.			For use with "RL" cylinders			
Use with Cyl. No.	Swivel Cap Order No.	Weight (kg)	A (mm)	B (mm)	A (mm)	B (mm)	Use with Cyl. No.	Swivel Cap Order No.	Wt. (kg)
150-200 ton	420867	4,0	38,1	130,2	25,4	71,4	55-100 ton	420866	0,8
280 ton	420868	6,1	44,5	149,2	38,1	130,2	150-200 ton	420867	4,8
355 ton	420869	16,8	69,9	195,3	44,5	149,2	280 ton	420868	6,1
435 ton	420870	23,6	79,4	225,4	69,9	195,3	355 ton	420869	16,8
565 ton	420871	35,4	92,1	250,8	79,4	225,4	435 ton	420870	23,6
					92,1	250,8	565 ton	420871	35,4



Reduce the effects of off center loading. Tilts up to 5 degrees. Radial grooves on top of cap reduce load slippage. Notch across face of each cap helps keep loads having a protruding or round shaped centered.

"CENTER-HOLE" CYLINDER ACCESSORIES				
To use with Cyl. No.	RT172, RH203	RT302, RH302 RH303, RH306	RT503, RH503, RH603 RH605, RH606	RT1004
Order Set No.	RHA20	RHA30	RHA50	RHA100
1 Speed Crank	1 24814	27198	29595	303785
2 Speed Nut	2 302482	302483	33439	34136
	1"-8	1 1/4"-7	1 5/8"-5 "	2 1/2"-8
3 Adjusting Screw	3 32118	34758	32698	32699
	1"-8 508 mm Lg.	1 1/4"-7 x 609,6 mm Lg.	1 5/8"-5 1/2" x 762 mm Lg.	2 1/2"-8 x 869,9 mm Lg.
4 Threaded Insert	4	Order threaded insert for RH series cylinders with the accessory set. (See page 35) Threaded insert supplied with RT series cylinders.		
5 Pushing Adapter	5 201923	34510	34755	-
	1"-8, 12,7 mm dia. shank	1 1/4"-7 x 19,1mm dia. shank	1 5/8"-5 1/2" x 25,4 mm dia. shank	
6 Pushing Adapter	6 201454	34511	34756	-
	1"-8, 19,5 mm dia. shank	1 1/4"-7 x 25,4 mm dia. shank	1 5/8"-5 1/2" x 31,7 mm dia. shank	
7 Jack Screw	7 24813	25931	32701	32702
	1"-8 x 177,8 mm Lg.	1 1/2"-7 x 228,6 mm Lg.	1 5/8"-5 1/2" x 279,4 mm Lg.	2 1/2"-8 x 406,4 mm Lg.
8 Screw Cap	8 28228	28229	28230	-
	1"-8 x 38,1 mm dia.	1 1/4"-7 x 44,4 mm dia	1 5/8"-5 1/2" x 571,5 mm Lg.	

