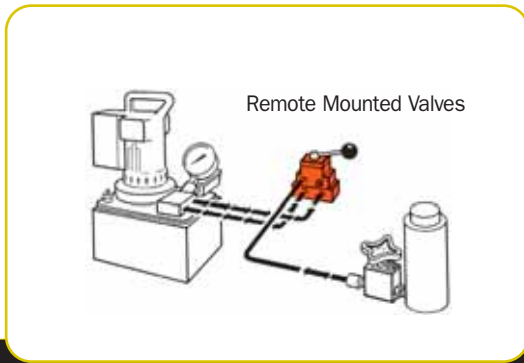


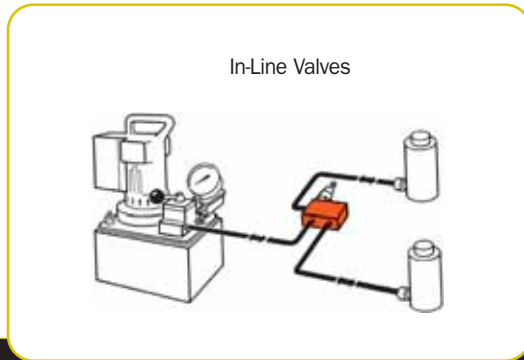
Valves

HYDRAULIC REMOTE /
IN-LINE

Valve selection chart



| Order No. | Page No. | *Cylinder Application | Operation | Valve Type | Volt | Advance / Return | Advance / Hold / Return | Posi-Check® Feature |
|-----------|----------|-----------------------|-----------|-----------------------------|------|------------------|-------------------------|---------------------|
| 9508 | 121 | S.A. & D.A. | Manual | 4-way, 3 Pos. Closed Center | — | no | yes | yes |
| 9509 | 121 | S.A. & D.A. | Manual | 4-way, 3 Pos. Tandem Center | — | no | yes | yes |
| 9514 | 121 | D.A. | Solenoid | 4-way, 3 Pos. Tandem Center | 115 | no | yes | yes |
| 9524 | 120 | S.A. & D.A. | Solenoid | 3/4-way, 2 Pos. | 230 | no | yes | no |
| 9525 | 121 | D.A. | Solenoid | 4-way, 3 Pos. Tandem Center | 230 | no | yes | yes |
| 9526 | 121 | S.A. | Solenoid | 3-way, 2 Pos. | 230 | no | yes | no |
| 9554 | 120 | S.A. & D.A. | Solenoid | 3/4-way, 2 Pos. | 24 | no | yes | no |
| 9555 | 121 | D.A. | Solenoid | 4-way, 3 Pos. Tandem Center | 24 | no | yes | yes |
| 9556 | 121 | S.A. | Solenoid | 3-way, 2 Pos. | 24 | no | yes | no |
| 9559 | 121 | S.A. | Solenoid | 3-way, 2 Pos. | 115 | no | yes | no |
| 9593 | 120 | S.A. & D.A. | Solenoid | 3/4-way, 2 Pos. | 115 | no | yes | no |
| 9595 | 120 | S.A. & D.A. | Air | 3/4-way, 2 Pos. | — | no | yes | no |



| Order No. | Page No. | *Cylinder Application | Operation | Valve Type | Volt | Advance / Return | Advance / Hold / Return | Posi-Check® Feature |
|-----------|----------|-----------------------|-----------|--------------------------|------|------------------|-------------------------|---------------------|
| 9575 | 122 | S.A. | Manual | Shut-Off Valve | — | — | — | — |
| 9580 | 123 | S.A. | Automatic | One-way Check Valve | — | — | — | — |
| 9581 | 123 | S.A. & D.A. | Automatic | Pilot Op. Check Valve | — | — | — | — |
| 9596 | 122 | S.A. | Manual | Load Lowering Valve | — | — | — | — |
| 9597 | 122 | S.A. & D.A. | Automatic | Sequence Valve | — | — | — | — |
| 9608 | 122 | S.A. & D.A. | Automatic | Pressure Reducing Valve | — | — | — | — |
| 9623 | 123 | S.A. & D.A. | Automatic | Pressure Relief Valve | — | — | — | — |
| 9631 | 123 | S.A. & D.A. | Automatic | Metering Valve | — | — | — | — |
| 9633 | 123 | S.A. & D.A. | Automatic | Pressure Regulator Valve | — | — | — | — |
| 9720 | 122 | S.A. & D.A. | Automatic | Counter Balance Valve | — | special | — | — |
| 9721 | 122 | S.A. & D.A. | Automatic | Counter Balance Valve | — | special | — | — |
| RV12178 | 123 | — | Automatic | Relief Valve | — | — | — | — |

HYDRAULIC ACCESSORIES

"S.A." represents single-acting cylinders, "D.A." represents double-acting cylinders.
For pump-mounted valves, see pages 45-51